

ELECTRIC
SCHOOL BUS
NETWORK



DRIVER ENGAGEMENT

Pacific Electric School Bus Working Group

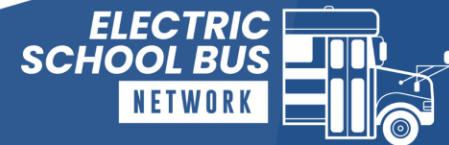
May 3, 2023 | 1:00 PM PT



MAY 3, 2023

WORKING GROUP AGENDA

- Intro to Electric School Bus Network
- CARB Workgroup
- Guest Speaker Introduction: Driver Engagement
 - Harold Brand
 - Deborah Duarte
 - Jacqueline Hayes
- Q+A with Speakers
- Summary + Closing



MEET THE TEAM



Rachel Chard
National Program
Manager,
Electric School Bus



Chrystal Ales
Project Manager



Juan Espinoza
Project Manager



Liza Walsh
Associate Project
Manager





ESB NETWORK

The Electric School Bus Network accelerates nationwide school bus fleet electrification through peer-to-peer networking and dialogue-driven working group meetings for school districts, advocacy organizations, government organizations, and industry representatives. The ESB Network provides access to educational tools, resources, and subject matter experts to help support the electric school bus fleet transition.

In Partnership With:



Stay informed

- Subscribe to Standard HVIP updates
 - www.californiahvip.org/contact
- Subscribe to <https://public.govdelivery.com/accounts/CARB/subscriber/new>
 - HVIP Public School Bus Set-Aside Workgroup – May 9th, 2023
 - Register Link:
https://energy.zoom.us/webinar/register/WN_GsZc2y18RZqB2vlpeVymCA#/registration





DRIVER ENGAGEMENT

- **Topics we will be discussing this workgroup**
 - How many ESBs currently in operation/ordered at the school district
 - How and when did you include drivers in the ESB process?
 - What training did your drivers receive?
 - How do you incorporate driver feedback into your ESB adoption process?



ELECTRIC
SCHOOL BUS
NETWORK

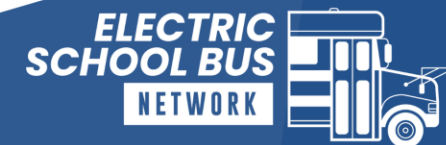


DRIVER ENGAGEMENT PANEL

Harold Brand
Regional
Transportation
Manager
Los Angeles Unified
School District

Deborah Duarte
Regional
Transportation
Manager
Los Angeles Unified
School District

Jacqueline Hayes
Assistant Director of
Contract Operations
and Fleet
Boston Public Schools





LAUSD UNIFIED



READY FOR THE WORLD

The Board has already established a goal of using 100% renewable energy by 2040, and the Greening Schools and Climate Resilience Committee is looking hard at electrifying all our buses even sooner, by 2035,

Strategy: Early “Driver Inclusion” will help ease the ESB Transition



Providing an intense training program for our mechanics and school bus drivers will ensure student safety and academic excellence



Don't squeeze them out of the process



Obtain critical feedback to gain a better understanding



School Bus Driver inclusion and training proficiency

A Bus Driver is a primary stakeholder and subject matter expert. Develop a culture of respect, and inspiration to improve the ESB adoption process and transition



Incentive: Annual Bus Bid by Seniority

A successful collaboration with our Labor Partners will continue to move us forward.

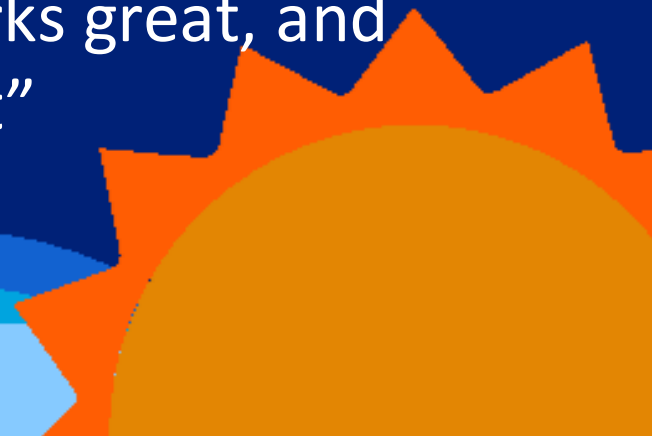
“The electric school bus is more efficient than other buses I’ve driven. I can plug it up in the evening after my route, and it’s ready to go at 100% in the morning.”

- Elroy Johnson, School Bus Driver

“Overall, I enjoy driving the electric school bus. It smells new and drives very smoothly” — Isaac Aquino, School Bus Driver

“This bus is clean and drives a lot smoother than other buses. The air conditioner works great, and the students love it”

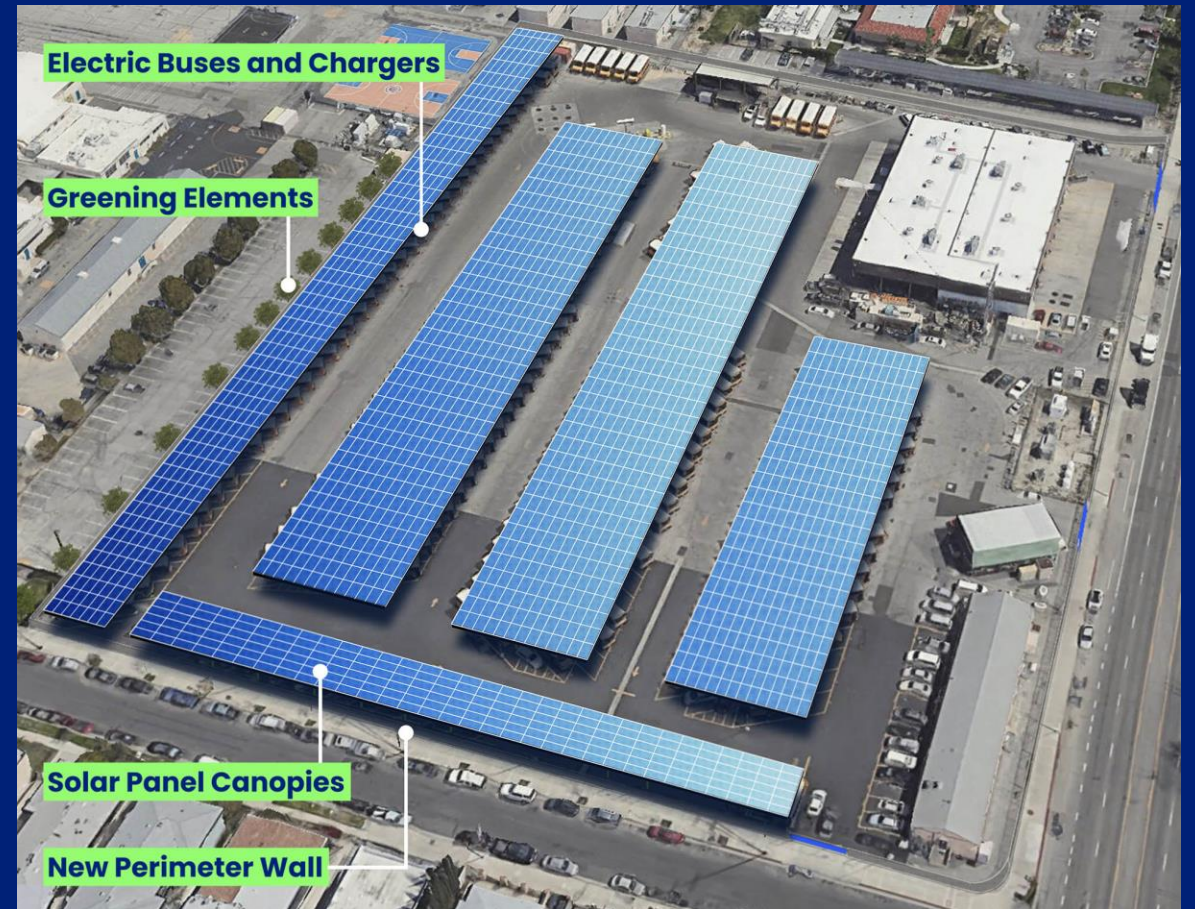
- Victor Garcia, School Bus Driver



Presenters:

Harold Brand
Regional Transportation Manager

Deborah L. Duarte
Regional Transportation Manager



Daniel Kang, Director of Transportation
115 N. Beaudry Av Los Angeles, CA 90012
EMAIL: daniel.kang@lausd.net



BOSTON Public Schools

Focus on Children



- How many ESBs do you have (ordered/in operation)?
 - Currently has 20 operational electric school buses with 18 more on order
- How and when did you include drivers in the ESB adoption process?
 - Started introducing drivers to the ESBs as soon as they were on Site
 - Pushed to get electric buses as early as possible to focus on driver training



BOSTON Public Schools

Focus on Children



- What training did your drivers receive?
 - Drivers received one-on-one training from a group of dedicated trainers
 - initial training took an hour or less, then on demand one-on-one coaching for a couple of weeks thereafter with regular check ins
- How do you incorporate driver feedback into your ESB adoption process?
 - Since the training is one-to-one there is a lot of opportunity for freed

GUEST SPEAKER Q+A

Please raise your hand or type your questions for our panelists in the chat!



ELECTRIC
SCHOOL BUS
NETWORK

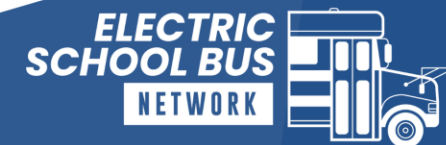


DRIVER ENGAGEMENT PANEL

Harold Brand
Regional
Transportation
Manager
Los Angeles Unified
School District

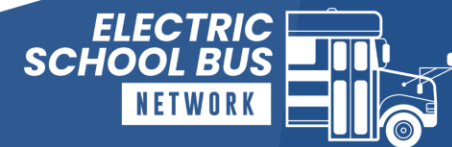
Deborah Duarte
Regional
Transportation
Manager
Los Angeles Unified
School District

Jacqueline Hayes
Assistant Director of
Contract Operations
and Fleet
Boston Public Schools



2023 EPA CLEAN SCHOOL BUS GRANT PROGRAM

- EPA anticipates awarding approximately \$400 million in Clean School Bus funding
- Application opened on April 24, 2023 and will close on August 22, 2023 at 11:59 p.m. Eastern Time
- Eligible applicants include state and local governmental entities that provide a bus service, public school districts, eligible contractors, nonprofit school transportation associations, Indian tribes, tribal organizations, or tribally controlled schools
- Info Session: May 10 at 3:00 pm ET/12:00 pm PT
- <https://www.epa.gov/cleanschoolbus/clean-school-bus-program-grants>



SAVE THE DATE!

A follow-up email will be sent on Friday 5/5 with the following:

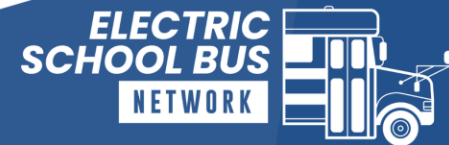
- Recording of the meeting
- Copy of slides

Upcoming ESB Regional Working Groups

- **Funding and Financing Electrification** | Midwest/Mountain meeting at 11:00 AM PT
- **Route Modeling** | South/Gulf Coast meeting at 10:00 AM PT
- **Third-Party Operators** | Northeast/Mid-Atlantic meeting at 10:00 AM PT

Questions?

- Email: SchoolBusTeam@calstart.org



ELECTRIC
SCHOOL BUS
NETWORK



THANK YOU FOR PARTICIPATING

